

# Industrial Control Panel Manufacture for OEMS

Competitive pricing, on-schedule delivery and high quality are key factors in a successful product. When control panels are required as part of a product, the infrastructure and purchasing power to meet these factors can be onerous and capital intensive.

The aesthetics and quality of a panel build-up reflect directly on the product and the company that produces it. Customers look for CSA, UL and ISO certifications. Everyone expects it to work; it also has to look good and cost less.

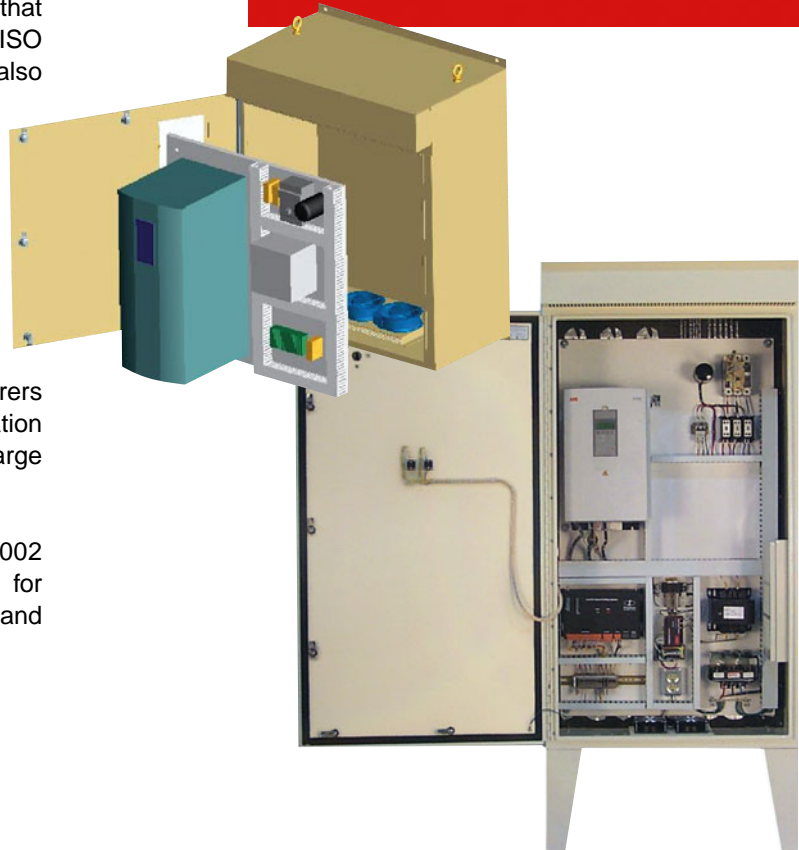
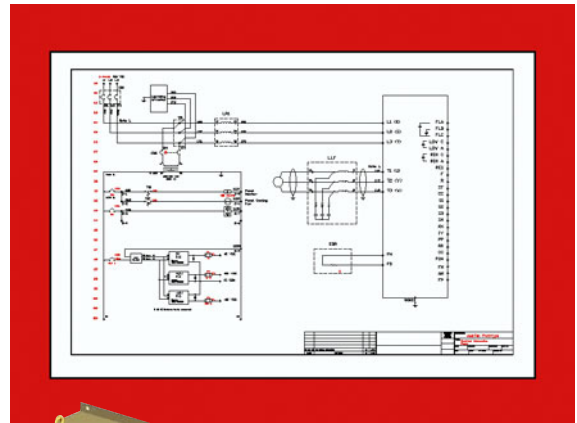
Contract manufacturing is the practice of choice for competitive companies. It enables them to focus resources and capital on moving a product in the market place where the return is greater.

## Polyphase Engineered Controls

is one of the leading suppliers and manufacturers of custom industrial electrical and instrumentation equipment in Western Canada supplying a large variety of industries since 1977.

Our manufacturing capabilities are ISO 9002 registered and certified with CSA and UL for industrial control equipment including motor and drive controls.

- High quality fabrication
- CSA and UL Certification
- Generation of Layout and Electrical Drawings
- Wire Markers & Tags for On-Site Installation
- Testing and commissioning facilities
- Manufacture / assembly for drop shipments



**Contract Manufacturing  
enables you to deliver  
high quality products  
at competitive prices.**



## Polyphase Engineered Controls

3555 - 93 Street, Edmonton, AB, Canada T6E 6N6

Tel: 780-465-3283 Fax: 780-465-3483

Email: [info@polyphasecontrols.com](mailto:info@polyphasecontrols.com)

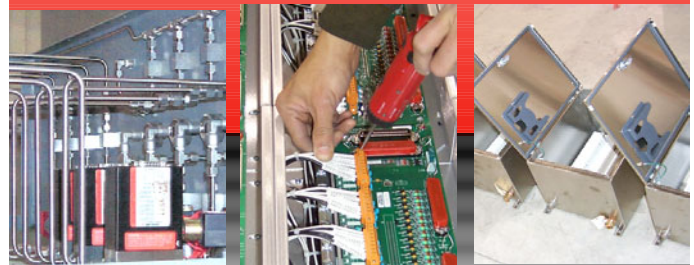
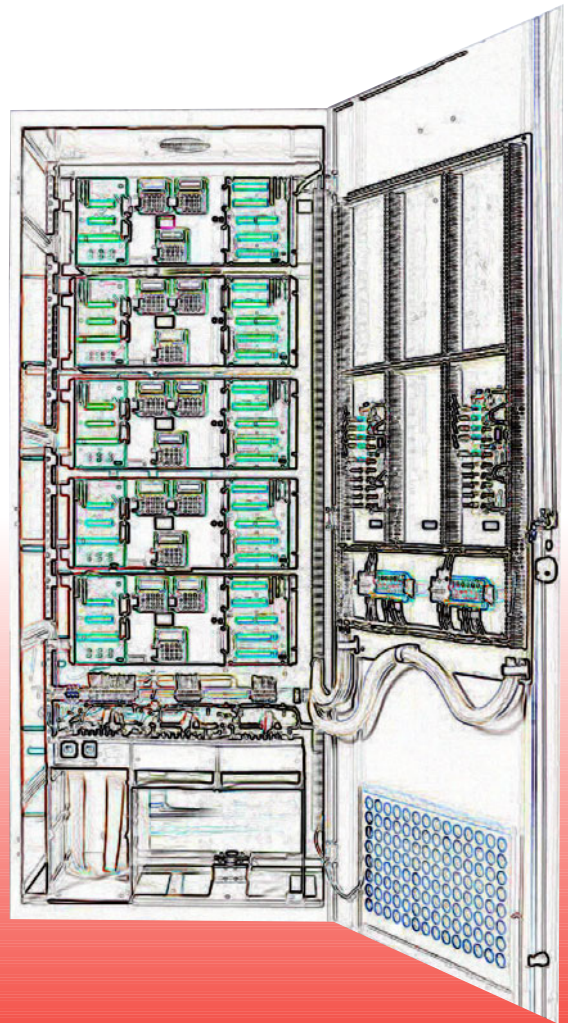
[www.polyphasecontrols.com](http://www.polyphasecontrols.com)

## CONSIDERABLE EXPERIENCE

Our production team consists of skilled wiremen and panel assemblers. All projects are carefully planned prior to fabrication enabling our production staff to provide superior quality workmanship on schedule at competitive prices.

Our engineering team has considerable experience in electrical controls and panel design. We can provide detailed layouts for panels or timely updates to your drawings.

When combined with our relationships with manufacturers of buildings and enclosures for a multitude of environments, we are well placed to meet the requirements of your most complex and demanding applications.



## Polyphase Engineered Controls

is a leader in the manufacture of:

- Control Panels
- Instrument Panels
- Mimic Panels
- PLC Control Panels
- RTU, MMC, Electrical & Analyzer Buildings
- Instrumentation Skids
- Purged Cabinets
- Field Panels
- Control Consoles
- DCS Marshalling Cabinets
- RTU Panels
- MCC Panels
- SCR Panels
- Junction Boxes
- Increased Safety Exe Boxes



[www.polyphasecontrols.com](http://www.polyphasecontrols.com)

3555 - 93 St., Edmonton, AB, Canada T6E 6N6 Tel: 780-465-3283 Fax: 780-465-3483 Email: [info@polyphasecontrols.com](mailto:info@polyphasecontrols.com)

  
**Polyphase**  
ENGINEERED CONTROLS